



AirMini™

The revolution you've been waiting for

ResMed brings you AirMini, the world's smallest CPAP device' ideal for patients looking for compact and discreet therapy.

Featuring a unique venting system and waterless humidification, it combines our latest technologies in a sleek, pocket-sized design that can be used at home or while patients are away.

To meet patients' lifestyle needs, satisfy comfort expectations and boost business benefits, start small with AirMini.





Small. Smart. Proven.

AirMini leverages the same proven algorithms our market-leading bedside devices do to help treat patients weighing 30kg or more with obstructive sleep apnea (OSA). It also includes AutoSet for Her, a mode which has been specifically designed to treat women with mild to moderate OSA.

With Bluetooth connectivity and a dedicated app, AirMini helps patients and clinicians set up for success and stay engaged with ongoing therapy.

Key features

- HumidX™ waterless humidification minimises heat and moisture loss for comfort throughout the night.
- ActiveAir™ advanced venting enables our latest therapy technologies to be delivered in a compact system.
- Bluetooth connectivity to smart devices and the dedicated AirMini app offer user-friendly setup and use.



AirMini (device only)
38140



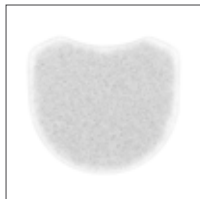
HumidX F20 **38012** (3 pk)
HumidX F20 **38013** (6 pk)



HumidX **38809** (3 pk)
HumidX **38810** (6 pk)
HumidX Plus **38812** (3 pk)
HumidX Plus **38813** (6 pk)



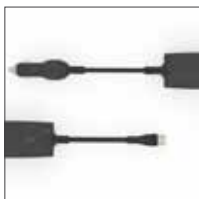
AirMini Tubing
38822



AirMini Filter
Std **38815** (2 pk)
Std **38816** (12 pk)



AirMini 20 W
AC Adapter **38831**



AirMini DC-DC
Converter **38839**



AirMini Travel Bag
38840



AirMini Travel Case
38841

For a complete list of AirMini accessories, and AirMini Bedside, Freedom and Travel Starter Kits, please refer to the AirMini Product and Accessories Fact Sheet.

Technical specifications

AirMini device

Dimensions:	133mm (W) x 84mm (D) x 52mm (H)
Weight:	300g
Housing construction:	Flame retardant engineering thermoplastic

Modes

	AutoSet, AutoSet For Her, CPAP
Operating pressure range	4 to 20 cm H ₂ O (4 to 20 hPa) in AutoSet, AutoSet For Her and CPAP modes

AirMini power

Standby power consumption:	1W
----------------------------	----

Sound

	Pressure level measured according to ISO 80601-2-70:2015 (CPAP mode) is 29 dBA with uncertainty of 2 dBA.
--	---

Power supply unit

AC input range:	100–240V, 50–60Hz 115V, 400Hz (nominal for aircraft use)
DC output:	24V, 0.83A
Typical power consumption:	6.3W
Peak power consumption:	27W

Environmental conditions

Operating temperature:	+5°C to +35°C
Operating humidity:	10 to 95% relative humidity, non-condensing
Operating altitude:	Sea level to 2,591 m; air pressure range 1013 hPa to 738 hPa
Storage and transport temperature:	-25°C to + 70°C
Storage and transport humidity:	5 to 95% relative humidity, non-condensing

Aircraft use

	ResMed confirms that this machine meets the Federal Aviation Administration (FAA) requirements (RTCA/DO-160, section 21, category M) for all phases of air travel.
--	--

Electromagnetic compatibility

	The AirMini complies with all applicable electromagnetic compatibility requirements (EMC) according to IEC60601-1-2:2014, for residential, commercial and light industry environments.
--	--

IEC 60601-1:2014 (Edition 3.1) classification

	Class II (double insulation), Type BF, Ingress protection IP22.
--	---